



# HOTEL RENDEZVOUS

---

## CONFERENCING

---



## CONFERENCING AT HOTEL RENDEZVOUS

---

Hotel Rendezvous is ideally situated to host your business conferencing, with multiple meeting spaces to suit both small and large scale gatherings.

With free parking on site, breakout rooms, Skipton Bar and Grill, and 96 en-suite bedrooms, as well as a leisure club with gym and pool, we are able to offer all of the amenities you could need for both local and out of town guests.

We would be happy to tailor your conference to meet your specific requirements.

---





# Room Features

	Location	Natural Daylight	Blackout	Air Con	Unique Features
Malham Suite	Floor 3	Yes	Curtains	Yes	Stage, Bar, Chandeliers, Dancefloor, Smoking Terrace
Wharfedale Suite	Floor 2	Yes	Blinds	Yes	Dancefloor, Smoking Terrace
Winterburn Suite	Floor 3	Yes	Blinds	Yes	Bar, Dancefloor
Restaurant	Floor 2	Yes	No	No	Canal Side, Dales Views
Conservatory	Floor 2	Yes	Blinds	No	Canal Side, Dales Views
Old Nursery	Floor 1	Yes	Curtains	No	Outdoor Ground Floor Access
Webber Gallery	Floor 4	No	No	Yes	Large Boardroom Table
Hospitality Lounge	Floor 1	Yes	Curtains	No	Relaxed Seating
Bar	Floor 2	Yes	Curtains	No	24 Hour Bar, Flat Screen Sky TV, Outdoor Terrace

*All of our rooms are wheelchair accessible and have WiFi data ports*





## MALHAM SUITE

The Malham Suite is our largest room and is located on floor 3. Boasting a fantastic wooden floor throughout and chandelier-lit high ceiling with optional staging, it is an ideal and versatile meeting space.

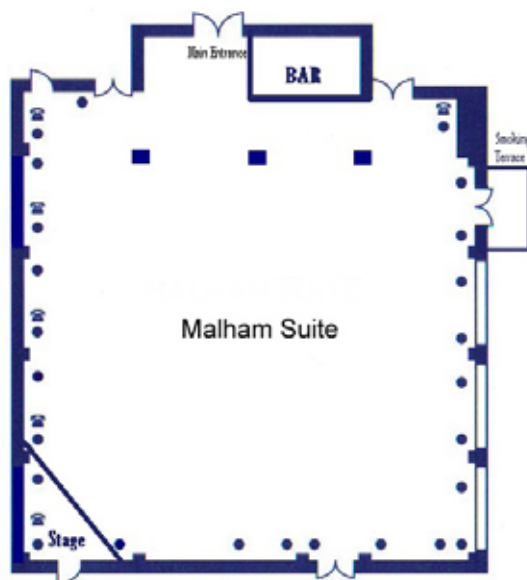
The space can be used as a whole for large group presentations or an open plan workshop space. Sporting its own gallery area with a modern yet classical design, it can be set up to suit any layout. This room also has its own private smoking terrace and access to a satellite kitchen if required.

### MAXIMUM CAPACITIES

Theatre	Classroom	Boardroom	U-shape	Cabaret
500	250	120	100	250

### KEY TO PLANS

- Power Point
- ☎ Telephone Point



### MAXIMUM CAPACITIES

Max Length :	18 m
Max Width :	20.6 m
Max Height :	4.6 m
Floor Area (m <sup>2</sup> ) :	371 m



## WEBBER GALLERY

With a permanent solid wood boardroom table, the Webber Gallery provides the ideal location for 'away from the office' meetings. This room is located on floor 4.

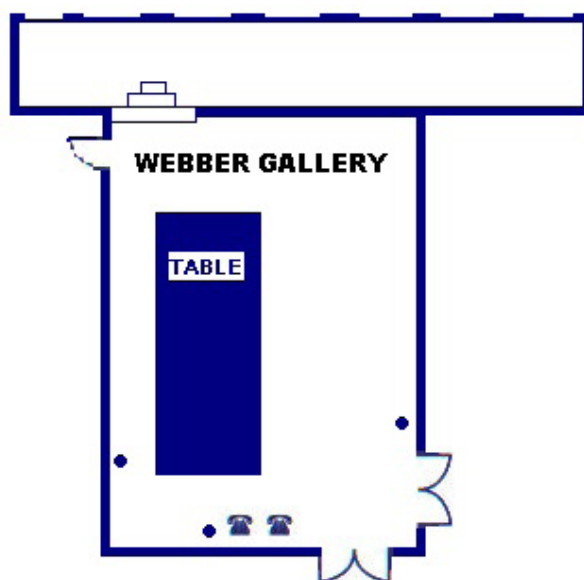
It has a balcony area which overlooks the Malham Suite which can be used for break out spaces.

### MAXIMUM CAPACITIES

Theatre	Classroom	Boardroom	U-shape	Cabaret
0	0	20	0	0

### KEY TO PLANS

- Power Point
- ☎ Telephone Point



### MAXIMUM CAPACITIES

Max Length : 8.9 m

Max Width : 9.3 m

Max Height : 2.6 m

Floor Area (m<sup>2</sup>) : 47 m



## WHARFEDALE SUITE

The Wharfedale Suite is our second largest room and is located on floor 2. It is ideally placed adjacent to our bar & lounge areas, which can be used as break out areas if required.

With laminate flooring throughout, this is a flexible working space that can be setup in any layout. This room also has its own private smoking terrace.

### MAXIMUM CAPACITIES

Theatre	Classroom	Boardroom	U-shape	Cabaret
160	60	40	30	80

#### KEY TO PLANS

- Power Point
- ☎ Telephone Point



### MAXIMUM CAPACITIES

Max Length : 18.2 m

Max Width : 9 m

Max Height : 2.6 m

Floor Area (m<sup>2</sup>) : 163 m





## WINTERBURN SUITE

The Winterburn Suite is a mid-sized room located on floor 3.

With laminate flooring throughout, this is a flexible working space that can be setup in any layout. This suite has an interlinking door to the Malham suite and is perfectly located to be used as a break out or syndicate room.

### MAXIMUM CAPACITIES

Theatre	Classroom	Boardroom	U-shape	Cabaret
120	40	40	30	50

#### KEY TO PLANS

- Power Point
- ☎ Telephone Point



### MAXIMUM CAPACITIES

Max Length : 18.2 m

Max Width : 9 m

Max Height : 2.6 m

Floor Area (m<sup>2</sup>) : 163 m





## OLD NURSERY

The Old Nursery is one of our smaller rooms and is located behind reception on the ground floor.

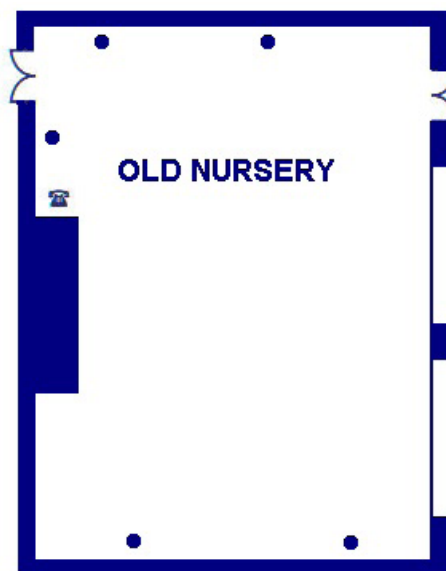
The room is carpeted throughout and can be setup in any layout. This room has French windows opening onto its own private outside area, which is ideal for loading and unloading. The nearby lounge area is perfect to use as a waiting area or break out space.

### MAXIMUM CAPACITIES

Theatre	Classroom	Boardroom	U-shape	Cabaret
40	20	20	15	24

#### KEY TO PLANS

- Power Point
- ☎ Telephone Point



### MAXIMUM CAPACITIES

Max Length : 8 m

Max Width : 7.5 m

Max Height : 2.7 m

Floor Area (m<sup>2</sup>) : 60 m



# Conferencing Packages

## Day Delegate Package

Dedicated Conference Advisor for the duration of your event

Main conference room hire

Arrival tea, coffee & biscuits

Mid morning tea, coffee & biscuits

Chefs choice buffet lunch

Mid afternoon tea, coffee & biscuits

Still Water & Cordials

Paper & pens

Flip chart stand, pad & pens

Projection Screen

WIFI access

On site parking

*Minimum numbers of 10 apply*

*Prices range from £29.50 - £39.50 per delegate*

## 24 Hour Delegate Package

*In addition to the Day Delegate Package:*

Three Course Dinner served in our restaurant or private dining options for an additional charge and subject to availability

En-suite bedroom

Full English / Continental Breakfast

Use of Leisure Club

*Minimum numbers of 10 apply*

*Prices range from: £95.00 per person – twin/double occupancy*

*£130.00 per person – single occupancy*

## Upgrades

If you have VIP guests, or an occasion to celebrate, upgrades to superior rooms and suites are available for an additional charge.

# Room Hire Rates

	Full Day 9am - 5pm	Half Day 8am - 12pm / 1pm - 5pm	Evening 6pm onwards
Malham Suite	£550	£350	£300
Wharfedale Suite	£350	£250	£200
Winterburn Suite	£300	£200	£150
Old Nursery	£250	£175	£125
Webber Gallery	£200	£125	£100

## REFRESHMENT CHARGES

Item	Price
Tea / Coffee / Biscuits	£2.50
Tea / Coffee / Cakes	£4.50
Closed Sandwiches & Chips	£9.50
Chefs Choice Buffet (6 items)	£15.50

Room Hire charges dependant on numbers and time of booking.

Food and Beverage charges listed per person.

Discounts are available to charities, please speak to your events manager for rates.

Please call our events team on 01756 700100 for an individual quotation.





# Business Service Hire

---

## BUSINESS CENTRE SERVICES

---

Reception is open 24 hours a day and can provide you with any administrative services you require.

Item	Price
Copy typing services per A4 sheet	£5.00
Telephone calls per unit	30p
Photocopying per sheet	5p
Postal Services UK & Overseas	cost only

---

## ADDITIONAL EQUIPMENT HIRE

---

Additional equipment can be hired by prior arrangement.

Any additional audio visual equipment and presentation aids can be made available and quoted for upon request.

Item	Price
TV and DVD Player	£55
Voice Station Conference Phone	£25
Flip Chart, Pad and Pens	£10
Digital Projector	£60
PA System	On Request
Projection Screen	£10









# HOTEL RENDEZVOUS

## SKIPTON

CONFERENCING

